

QUICK COLOR MATCH

[→ Product Website](#)

Software for creative professionals

Quick Color Match was developed by EIZO in cooperation with Adobe, Canon, and Epson. In close collaboration with leading global companies in the creative industry, EIZO developed a quick and easy software programme for printing photos on home inkjet printers. You can use Quick Color Match by dragging and dropping to make the necessary adjustments to monitor, software, and print settings. This allows you to quickly and easily match the monitor display and printout with each other.



Quick Color Match



Adobe, Canon, Epson, and EIZO United For a Powerful Solution

EIZO ColorNavigator or Quick Color Match?

Which software is the right choice for your workflow?

Quick Color Match was developed by EIZO in cooperation with Adobe, Canon, and Epson. In close collaboration with leading global companies in the creative industry, EIZO developed a quick and easy software programme for printing photos on home inkjet printers.

You can use Quick Color Match by dragging and dropping to make the necessary adjustments to monitor, software, and print settings. This allows you to quickly and easily match the monitor display and printout with each other.

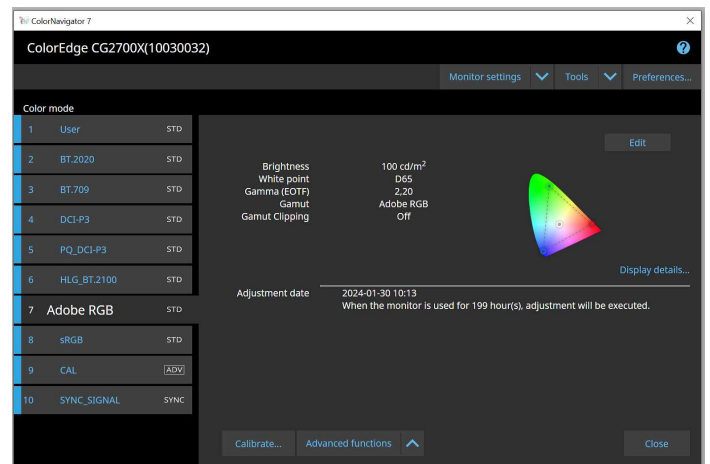


If the hardware and software settings are not matched, even the best computer hardware cannot display the correct colours. First the monitor settings are affected, then the colour settings of the image editing software, and finally the printer settings. If just one of these settings is incorrect, the monitor display often does not match the printout.

With Quick Color Match, all you need to do is select the paper and the software makes the necessary adjustments to the colour management settings, allowing you to quickly and easily match the monitor display and printout with each other.

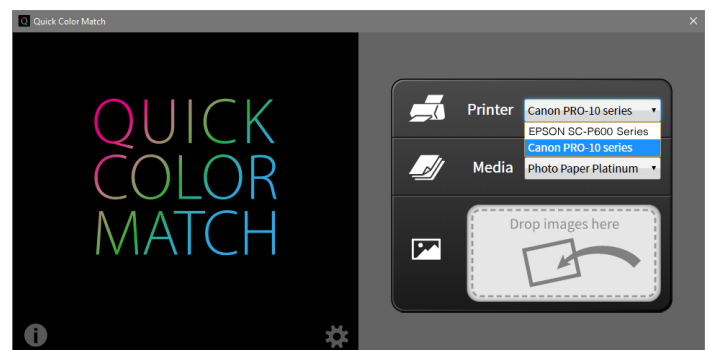
ColorNavigator

ColorNavigator is a monitor adjustment software – a professional programme that gives you numerous configuration options for the hardware calibration of ColorEdge monitors. ColorNavigator allows you to make complex adjustments and is easy to use, even for beginners. The settings of the image editing software or the printer do not affect ColorNavigator.



Quick Color Match

Quick Color Match makes all the necessary adjustments to the colour management settings in the image editing workflow for home printing. It allows users – including the ones who are relatively new to colour management – to quickly and easily match the monitor display and printout with each other. Quick Color Match also offers a feature for regularly calibrating the monitor.



Technical Data

SUPPORTED OPERATING SYSTEMS

Mac	macOS Sonoma (14) / macOS Ventura (13) / macOS Monterey (12) / macOS Big Sur (11, M1) / macOS Big Sur (11, Intel) / macOS Catalina (10.15) / macOS Mojave (10.14)
Windows	Windows 11 / Windows 10* (64-bit) * The ARM-based Windows 10 is not supported

SUPPORTED MONITORS

COLEDEGE MODELS	A complete list of monitors supported by Quick Color Match can be found on the EIZO Global website.
------------------------	---------------------------------------------------------------------------------------------------------------------

PRINTER

Canon	PIXMA PRO-1, PIXMA PRO-10, PIXMA PRO-10S, PIXMA PRO-100, PIXMA PRO-100S, imagePROGRAF PRO-1000
Epson	SC-P400, SC-P600, SC-P700, SC-P800, SC-P900, Series, Stylus Photo R2000, Stylus Photo R3000

PRINT PLUGIN

Canon	Print Studio Pro Vers. 2.2.0 and higher
Epson	Epson Print Layout Vers. 1.3.5 and higher

RETOUCH SOFTWARE

Recommended Retouch Software	Adobe Photoshop CC / CS6
Compatible with Canon Print Studio Pro *	Adobe Photoshop Lightroom Classic, Adobe Photoshop Elements, Canon Digital Professional
Compatible with Epson Print Layout *	Adobe Photoshop Lightroom Classic, Adobe Photoshop Elements, Nikon NX Studio, Nikon ViewNX-i

PAPER

Canon Paper	Photo Paper Pro Platinum, Photo Paper Plus Glossy, Photo Paper Pro Luster, Photo Paper Pro Premium Matte, Photo Paper Plus Semi-Gloss, Matte Photo Paper
Epson Paper	Premium Glossy, Semigloss, Premium Luster, Archival Matte, Matte, Velvet Fine Art Paper, UltraSmooth Fine Art Paper
Iford Paper	Gold Fibre Silk, Gold Fibre Gloss, Smooth Cotton Rag, Textured Cotton Rag, Smooth Pearl, Smooth Gloss
Pictorico Paper	Pro Hi-Gloss White Film, Pro Hi-Gloss Photo Paper, Pro Semi-Gloss Paper, Pro Cotton Paper, Pro Soft-Gloss Paper, Pro Design Paper Plus, GEKKO Blue
Hahnemühle Paper	FineArt Baryta, Photo Rag Baryta, Photo Rag, Photo Rag Bright White, Photo Rag Ultra Smooth, German Etching, Photo Luster, Photo Matt Fibre
Sihl Paper	Metallic Pearl High Gloss Photo Paper 290, High Gloss Photo Paper 300, Lustre Photo Paper 300, Lustre Photo Paper Duo 300, Satin Baryta Paper 295, Smooth Matt Cotton Paper 320, Textured Matt Cotton Paper 320
Tecco Paper	PHOTO PM230 Matt, PHOTO PL285 Luster, PHOTO PUW285 Glossy Ultra White, PHOTO PFR220 DUO Fine Art Rag, PHOTO GB330 Galleryboard, PHOTO BT270 Baryt, PHOTO BMT275 Baryt Matt
Isewashi Photo	Yukiuro, Torinoko, Basewo, KiyoraBasewo
Tesuki Isewashi	Oonaosi, Mitumata, Husho