



[→ Product Website](#)

2 -megapixel Medical Dental Monitor

Modern modalities for tube, panoramic or DVT images provide clear images. However, the reproduction quality of X-ray images in the dental-radiological environment depends to a large extent on the choice of the right screen. DIN standard 6868-157 introduced minimum requirements for the use of radiological image reproduction systems in dental diagnostics. Depending on the room class (RK), DIN requires certain minimum brightness levels. Room class 5 is decisive for diagnosis rooms in dental diagnostics. EIZO offers the optimum monitor for this purpose in the form of the RadiForce MX232W-DT.

- ✓ 2-megapixel color LCD monitor with LED backlight and automatic luminance control for reliably high and permanently stable brightness
- ✓ Gray scale reproduction with DICOM tone curve
- ✓ Palette with 68 billion color tones for precise color reproduction with up to 12 bits
- ✓ Calibration of white point and tonal characteristics
- ✓ Automatic control of luminance distribution (Digital Uniformity Equalizer)
- ✓ Prepared for acceptance and constancy testing according to DIN 6868-157 and QS-RL
- ✓ 5-year warranty for highest investment security

Image quality

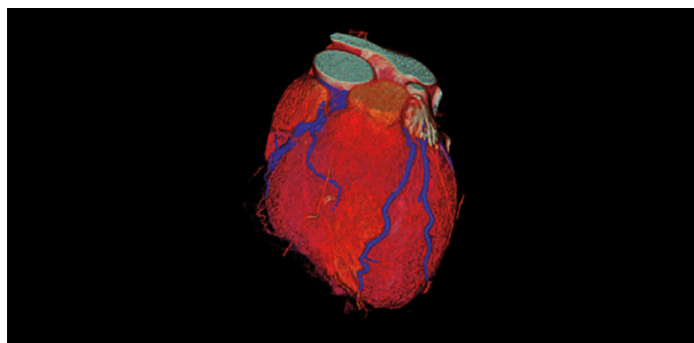
**Precise, high-contrast,
bright and crisp screen**

Excellent image quality for the finest details

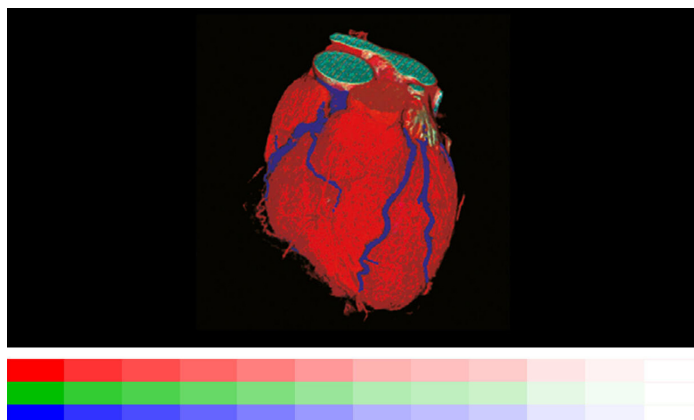
Thanks to the high 2 Megapixels (colour) resolution, a strong contrast ratio of 1000:1 and stable brightness of up to 300 cd/m², the monitor offers excellent image quality. Even the differences between the finest details are shown – regardless of your viewing angle. This is a great advantage if multiple physicians are looking at the screen.

One billion color tones thanks to 12 bit LUT

Color rendering is controlled by a 12 bit look-up table (LUT), up to 10 bits of which are available in the Display-Port connection. This produces a resolution with a maximum of 1 billion color tones. The rendering characteristic and fine structures required for diagnostics can therefore be precisely identified.



With 12 bit LUT



Without 12 bit LUT

Better viewing thanks to the widescreen format

Thanks to the aspect ratio of 16:10 or 16:9, you can see considerably more from a horizontal perspective than on conventional monitors, for example when performing clinical reviews on two adjacent images.

Uniform brightness and high color purity

The monitor shines thanks to its high color purity and uniform illumination. This is down to the Digital Uniformity Equalizer (DUE), which corrects imbalances automatically, pixel by pixel. Gray and color tones of radiological and other medical images are correctly rendered over the entire display. This is essential for precise image reproduction.



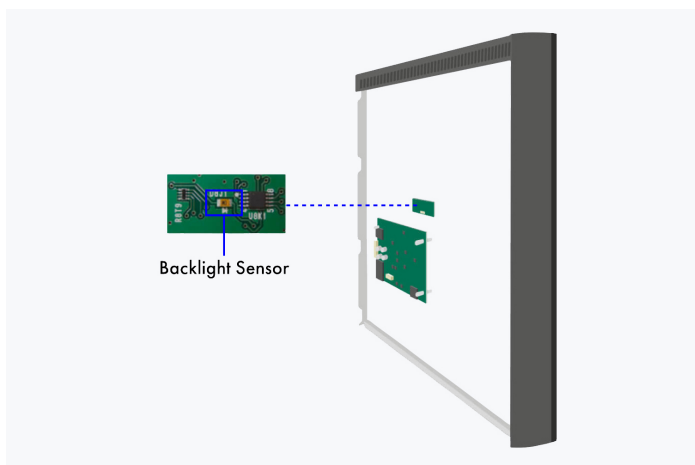
With DUE



Without DUE

Constant brightness during operation

A sensor for the backlight permanently determines the luminance of the monitor. The benefit: The defined and calibrated values are rendered exactly just seconds after the monitor is turned on and remain constant during the entire period of use. The sensor is invisibly integrated in the monitor.



Back of the monitor

Software and ease of use Features for greater comfort

RadiCS LE

Brightness and DICOM[®] characteristic curve can be checked using the [RadiCS LE software](#) and automatically

calibrated according to the factory default settings. The integrated sensor in the device takes care of this. The calibration of other tone value curves, such as CIE, is also possible with RadiCS LE.

Improved comfort Efficiency in diagnostics

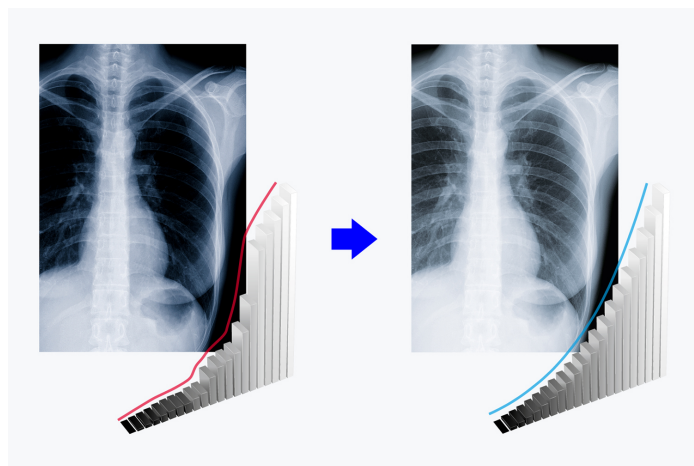
Extended durations of use thanks to automatic shut down

The monitor has an automatic shut down option for the backlight (backlight saver). This extends the duration of use. Similar to a screen saver, the LEDs turn off when the screen is not being used.

The backlight saver is part of the [RadiCS software](#).

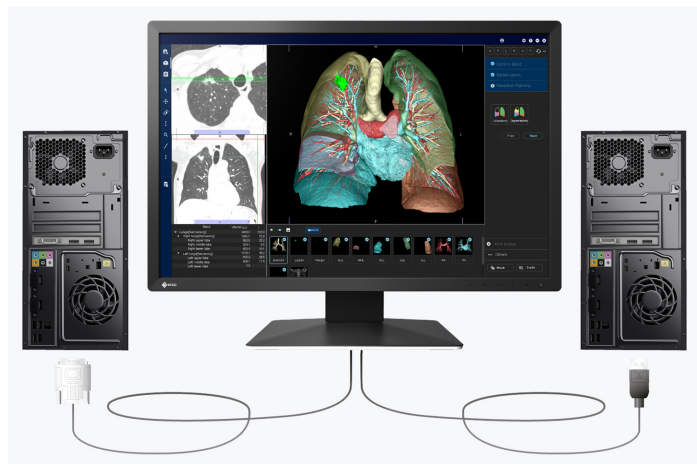
Display of DICOM[®] characteristic at the press of a button

EIZO measures and adjusts each tone of grey carefully so that the monitors comply with the DICOM[®] standard when delivered from the factory. The result is a particularly consistent gradation of grey tones, allowing for optimal radiological clinical reviews.



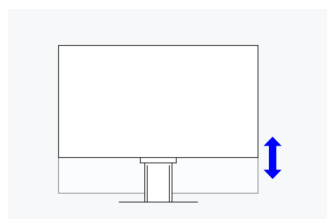
Connections for two computers

DisplayPort and DVI-D input enable the connection of two image signals. You can therefore connect two computers simultaneously. You can switch between them automatically or manually, if desired.

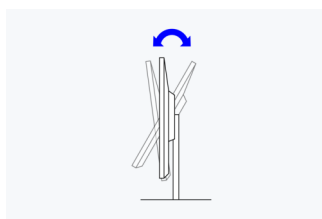


Ergonomic stand

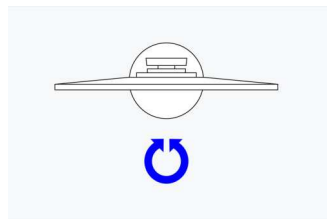
Ergonomic and stable: the adjustable stand focuses on ergonomics. You can rotate, swivel and tilt the monitor stand until you find the most comfortable setting for your back, neck and sitting posture. It features continuous height adjustment and can be lowered almost to the base plate of the stand, enabling you to position the top image line ergonomically right below your eye level.



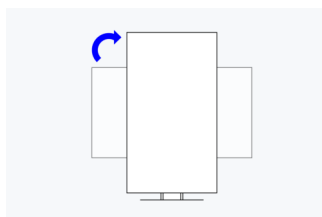
Height
150 mm



Tilt
Between 5° forwards and 35° backwards



Swivel
344°



Rotation
clockwise

Sustainability

Environmentally and socially conscious production

Socially responsible production

The MX232W-DT is produced in a socially responsible way. It is free of child labour and forced labour. Suppliers along the supply chain have been carefully selected and they have also committed themselves to produce in a socially responsible way. This applies in particular to conflict minerals. We present a detailed report about our social responsibility annually and voluntarily.



Environmentally and climate friendly

Each MX232W-DT is manufactured in our own factory, which implements an environmental and energy management system in accordance with ISO 14001 und ISO 50001. This includes measures to reduce waste, wastewater and emissions, resource and energy consumption, as well as to encourage environmentally conscious behavior among employees. We publicly report on these measures on an annual basis.



Sustainable and durable

The MX232W-DT is designed to have a long service life and normally outlasts the warranty period by some distance. Replacement parts are available many years after production has ceased. The entire lifecycle takes into account the impact on the environment as the longevity of the product and the fact it can be repaired saves resources and protects the environment. When designing the MX232W-DT, we took a minimalistic approach to our resources by using high-quality components and materials, as well as a careful production process.



Warranty

Highest investment security

Five-year warranty

EIZO grants a five-year warranty. This is possible thanks to the highly developed production process based on a simple principle of success: sophisticated and innovative technology, made from high-end materials.



Graphics board recommendation

For precise diagnostics

EIZO Graphics card MED-XN43

The EIZO graphics card supports the properties, functions, and settings of the RadiForce MX232W-DT optimally. It enables precise diagnosis and can control several monitors simultaneously. EIZO offers technical support and warranty service for the graphics card.

[To the graphics card overview](#)



Technical Data

GENERAL	
Item no.	MX232W-DT
Case color	White
Areas of application	Healthcare
Product line	RadiForce
Areas of application	Dentist, Dental diagnostic room
SCREEN	
Screen size [in inches]	23
Screen size [in cm]	58,4
Format	16:9
Viewable image size (width x height) [in mm]	509 x 286
Resolution in MP	2 Megapixels (colour)
Ideal and recommended resolution	1920 x 1080 (Full HD)
Pixel pitch [in mm]	0,265 x 0,265
Supported resolutions	1920 x 1080 (Full HD), 1680 x 1050, 1600 x 1200, 1280 x 1024, 1024 x 768, 800 x 600, 720 x 400, 640 x 480
Panel technology	IPS
Max. viewing angle horizontal	178
Max. viewing angle vertical	178
Number of colors or greyscale	1.07 billion colors (DisplayPort, 10 Bit), 16.7 million colors (DVI, 8 Bit), 16.7 million colors (DisplayPort, 8 Bit)
Color palette/look-up table	68 billion colour tones / 12 bit
Max. brightness (typical) [in cd/m ²]	300
Factory calibrated brightness [in cd/m ²]	230
Max. dark room contrast (typical)	1000:1
Backlight	LED
FEATURES & OPERATION	
Preset color/greyscale modes	2x manual memory locations, sRGB, Paper, DICOM
DICOM tone curve	✓
Hardware calibration of brightness and light density characteristic curve	✓
Digital Uniformity Equalizer (homogeneity correction)	✓
On-screen menu languages	de, en, fr, es, it, se
Adjustment options	DICOM tonal value, Brightness, Color temperature /White point, Gamma, Color saturation, Resolution, Scaling, OSD language
Integrated power unit	✓
CONNECTIONS	
Signal inputs	DVI-I, DisplayPort (HDCP 1.3)
USB specification	USB 2
USB upstream ports	1 x type B
USB downstream ports	2x type A
Graphic signal	DVI Single Link (TMDS), RGB Analog, DisplayPort
ELECTRICAL DATA	
Frequency	Digital: 30,5-67,5 kHz/58,5-61,5 Hz; Analog: 30,5-67,5 kHz/58,5-61,5 Hz
Maximum Power Consumption [in watts]	53 (at maximum brightness with all signal inputs and USB ports in use)
Max. Power consumption in stand-by mode [in watts]	0.5
Power consumption with power switch off [in watts]	0
Power supply	AC 100-120 V / 200-240 V, 50/60 Hz
DIMENSIONS & WEIGHT	
Dimensions (incl. stand) (width x height x depth) [in mm]	544 x (387 - 537) x 245
Weight (incl. stand) [in kg]	7.7
Weight (without stand) [in kg]	4.9
Rotatability of the stand [in °]	344
Tiltability forwards/backwards [in °]	5 / 35
Pivot between portrait / landscape	clockwise
Height adjustment range [in mm]	150
Hole spacing	100 x 100
CERTIFICATION & STANDARDS	
Certification	CE (Medical Device), CSA C22.2 Nr. 601-1, EN60601-1, IEC60601-1, UL60601-1, C-Tick, FCC-B, CAN ICES-3 (B), VCCI-B, RoHS, WEEE, CCC, GOST-R
SOFTWARE & ACCESSORIES	
Accompanying software and other accessories are available for download	RadiCS LE
Other box contents	Signal cable DVI-D - DVI-D, USB cable (Type A - Type B), Signal cable DisplayPort - DisplayPort, Manual via download, Power cord
Accessories	RadiNET Pro, RadiCS (UX2-Kit)
WARRANTY	
Warranty periode	5 years

Find your EIZO contact:
EIZO AG - Switzerland
Moosacherstrasse 6, Au
8820 Wädenswil ZH
Phone +41 44 782 24 40
www.eizo.ch

All product names are trademarks or registered trademarks of EIZO Corporation in Japan and other countries or their respective companies. Copyright © 2024 EIZO Europe GmbH, Belgrader Str. 2, 41069 Mönchengladbach, Germany. All rights, errors and modifications reserved. Latest update: 10.06.2024