

[→ Product Website](#)[→ Experience in AR](#)

From photographers who make films to videographers who take photographs, right through to time-lapse photography and cinemagraphs – the borders between visual content are becoming visibly blurred, while also growing ever closer at the same time. Videographers want to see their material in 4K UHD resolution, while photographers wish to preview the full sharpness of their printed images on the monitor. The ColorEdge CS2740 from EIZO fulfils both these requirements down to a tee. A graphics monitor's most important task is to display exactly what is stored in the camera. That's why each ColorEdge CS2740 is individually measured and optimally configured in the factory. The ColorEdge CS2740's hardware can be calibrated in just 90 seconds (measured using a MacBook Pro and EX4) without loss, which means that it consistently retains its factory-set perfection across its entire service life. A powerful notebook is often the only computer available. Thanks to its four USB downstream ports and its USB-C upstream port, hard disks, mice, keyboards and other peripheral devices such can be connected directly to the CS2740. With a single USB-C cable on the CS2740, the computer can be integrated into the complete desktop workflow and is supplied with up to 60 watts of power. Plus, the monitor also has HDMI and DisplayPort inputs. This makes the ColorEdge CS2740 the central hub for discerning creative professionals.

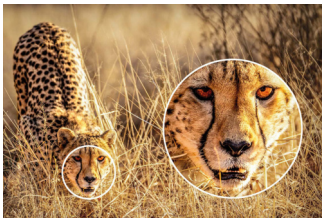
- ✓ 27-inch wide gamut LCD with 3840 x 2160 pixels (4K-UHD) delivers ultra-sharp details
- ✓ Wide gamut covering 99% of the Adobe RGB colour gamut
- ✓ Precise hardware calibration of brightness, white balance and gamma
- ✓ Digital Uniformity Equalizer for top-rate luminance distribution and colour purity
- ✓ Colour precision with 16-bit look-up-table and up to 10-bit colour reproduction
- ✓ USB-C (DisplayPort signal channel and power supply up to 60 watts), DisplayPort and HDMI inputs
- ✓ USB hub with 2 5Gbps (USB 3) and 2 USB 2 downstream ports
- ✓ EIZO microchip ensures precise, consistent and lasting colour display
- ✓ Recommended optional accessories: Measurement sensor for hardware calibration and monitor hood
- ✓ 5-year warranty for highest investment security

## Precision and and color accuracy

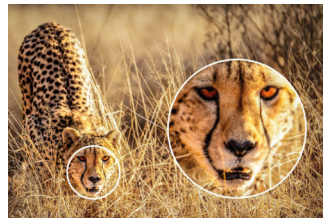
## High-contrast, bright and crisp screen

### 4K UHD resolution

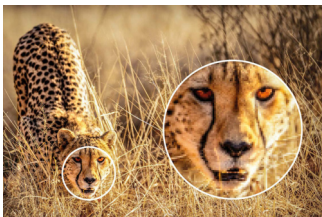
Thanks to the resolution of 3840 x 2160 (4K UHD), the CS2740 has an enormous pixel density of 164 ppi. Visible monitor pixels are guaranteed to be a thing of the past and even the monitor display gives a very meaningful impression of the subsequent print resolution. The IPS panel has a maximum brightness of 350 cd/m<sup>2</sup> and achieves a contrast ratio of 1000:1. Films can be assessed, edited and graded with the CS2740 in full 4K UHD resolution. The LCD module allows a viewing angle of 178 degrees. This keeps colour tones and contrasts stable in the user's viewing cone.



4K-UHD (3840 x 2160)



WQHD (2560 x 1440)



Full HD (1920 x 1080)

### FOR SATURATED COLORS

## Wide gamut color space

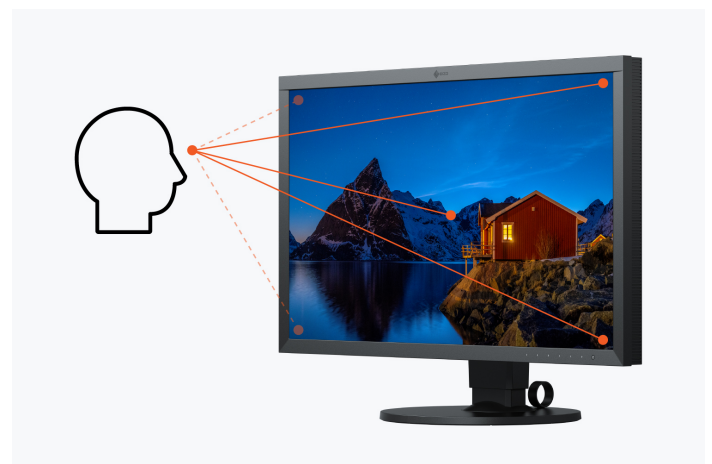
To be able to use the entire colour spectrum of modern cameras, you need a monitor with the largest possible colour space. Only then is it possible to visually assess and edit the saturated hues contained in the file. That is why the IPS panel of the ColorEdge CS2740 covers, for

example, the wide AdobeRGB photo gamut as well as the CMYK print gamut ISO-Coated V2 to more than 99 %. This means that the full colour spectrum of modern cameras is represented unaltered and without gaps. And a precise simulation of the print result in the softproof view is also guaranteed.



## Outstandingly sharp image quality

The monitor has an impressive top resolution (3840 x 2160 (4K UHD)), a very good contrast ratio of 1000:1 and a brightness of 350 cd/m<sup>2</sup>. For example, you can edit graphics and images down to the pixel. As an added benefit, text contours are clear and precise. The LCD panel with the IPS (Wide Gamut) panel allows for a viewing angle of 178 degrees. Ensuring that hue and contrast remain stable for the viewer.

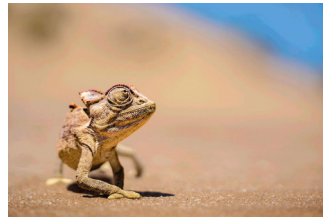


## Smooth and fluid transitions and gradients thanks to 16-bit LUT and 10-bit mode

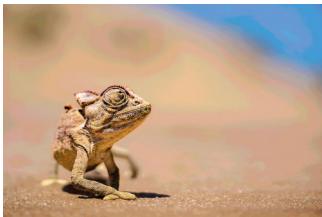
The LUT (look-up-table) on the CS2740 employs internal calculations with 16 bits for an extremely high colour depth and outputs the signals with up to 10 bits. This provides billions of hues for calculating the precise monitor display, effectively preventing display errors caused by the monitor such as banding or clipping, which can result in tonal breaks in gradients or unnecessary colours in greyscale. Even fine nuances and structures in dark or highly saturated areas of the image can be displayed in a differentiated and detailed manner.



10 bit (LUT: 16 bit)



8 bit (LUT: 16 bit)



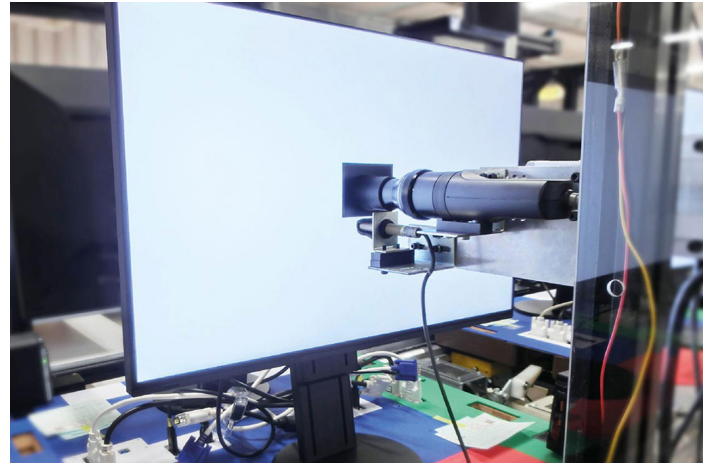
8 bit (LUT: 8 bit)

### READY TO USE RIGHT OUT OF THE BOX

## Perfect settings right from the factory

Every ColorEdge CS2740 is individually measured and optimally configured in the factory, enabling it to be used immediately after it has been unboxed. To this end, the gamma curves for the red, green and blue channels are closely checked and corrected, if necessary. This

unique EIZO factory calibration enables the user to start using the monitor with the preset gamut range right out of the box. This painstaking calibration at the factory ensures that the user can quickly recalibrate the monitor if needed using ColorNavigator.



### PERFECT RENDERING ACROSS THE ENTIRE SCREEN

## Digital Uniformity Equalizer

Each individual monitor panel is precisely measured over the entire surface at the EIZO factory. Any inhomogeneities in brightness and unnecessary colour are detected and removed. This process (Digital Uniformity Equalizer) guarantees that identical colours always look the same over the entire service life of the monitor, no matter where they are displayed. Only in this way is precise image processing and retouching possible.



With DUE



Without DUE

## FAST, EASY AND LOSSLESS

### Hardware calibration without any compromises

It is essential that the monitor is regularly calibrated to ensure that it always displays the same file in the same way over its entire service life. To do so, all ColorEdge monitors employ lossless hardware calibration. Unlike software calibration, which always involves the risk of loss of display quality, hardware calibration not only creates an adjustment profile for the graphics board but also calibrates the monitor's LUT (look-up-table).



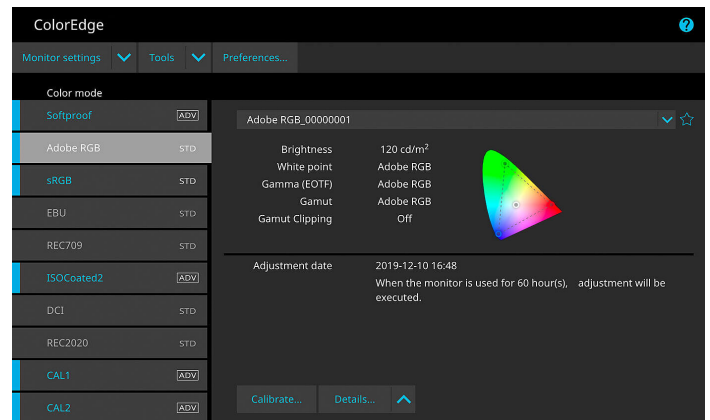
### EIZO software for fast calibration and printing

Each monitor ages and changes its display properties. This is why graphics monitors, which require an absolutely constant image display over the entire service life, must be regularly calibrated and adjusted. With the free calibration software ColorNavigator 7 from EIZO, the ColorEdge CS2740 can be adjusted within 90 seconds (measured with a MacBook Pro and EX4), easily and without any losses. This is to ensure that the same image still looks the same on the monitor five years from now.

[More information on the EIZO ColorNavigator](#)

The free Quick Color Match software helps users, even without in-depth expertise in colour management, to see on the monitor how their images will look when printed on their Canon or Epson inkjet printer at home. In this way, the images can be optimised for the special properties of the selected photo paper even before printing, which helps users avoid expensive misprints.

[More information on Quick Color Match](#)



### HDR gamma support

EIZO offers optional HLG and PQ curves for the CS2740 as part of the calibration with ColorNavigator. The optimized gamma curves make images appear more realistic compared to SDR, just as the human eye perceives the real world.

## FOR OPTIMIZED COLOR REPRODUCTION

### EIZO microchip

The CS2740 has a high-quality microchip (ASIC, Application-Specific Integrated Circuit), which EIZO developed especially for the special requirements involved in work demanding high colour accuracy. This microchip is the brain of a ColorEdge as it guarantees the precise, uniform and constant image display that is the hallmark of EIZO.

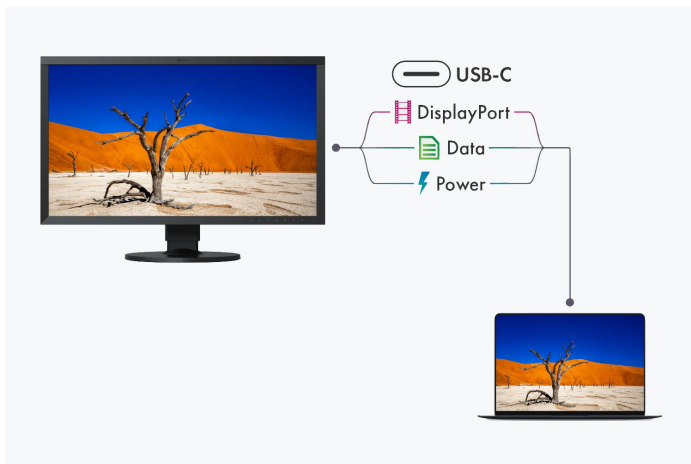


## Variety of ports Best connectivity

### Cutting-edge connectivity with USB-C

Image signal, USB data transfer as well as power supply with up to 60 W, all this and more can be realised with a single USB-C cable. This makes the ColorEdge CS2740 the central dock of the graphic workflow. Peripheral devices such as a mouse, keyboard or printer can be connected directly to the USB-A ports. Mobile devices such as laptops or tablets can even be charged via the USB-C cable with up to 60 W via the USB-C cable. In this way, a laptop and CS2740 can be turned into a fully-fledged desktop workstation with a quick flick of the wrist.

[Read more about USB-C in the EIZO Academy.](#)



### One monitor, many ports

The CS2740 supports a wide range of video formats via USB-C, HDMI and DisplayPort interfaces. This means that the monitor can not only be integrated into PC-based workflows but can also be used with HDMI feeders.



### TWO PCS, ONE CONTROL

#### KVM switch

It's never been easier to operate different PCs with a single mouse and keyboard. With its USB upstream ports, the CS2740 has a built-in KVM (Keyboard Video Mouse) switch. The monitor automatically links the mouse and keyboard to the currently active source computer. This means, for example, that a desktop PC and a laptop or a work and home PC can be operated on the same combination of monitor, mouse and keyboard. This ensures uninterrupted work and a tidy workspace.

## Ergonomics

### Working in a relaxed manner

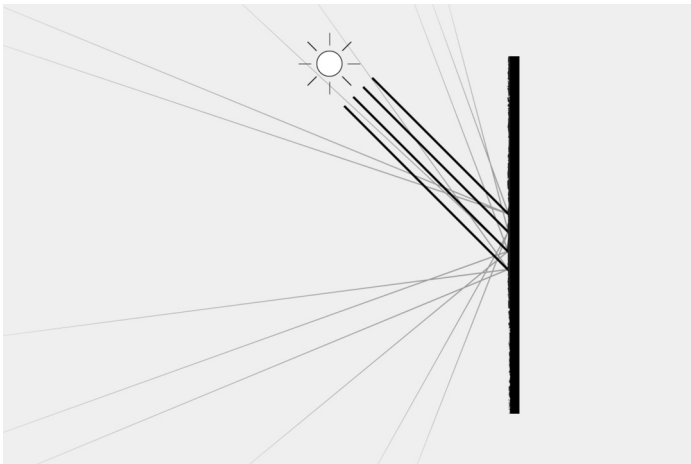
#### FOR THE SAKE OF THE EYES

#### Flicker free

The monitor is flicker-free at every brightness setting. This is great for users, as their eyes will not tire as quickly, allowing them to work in front of the screen for longer periods of time without fatigue.

## Anti-glare coating: more image, less reflection

The CS2740 offers a perfect, non-glare surface. By minimising glare by diffusing the reflected light, the CS2740 effectively protects your eyes from straining. This keeps your eyes from getting as tired and allows you to sit comfortably in front of the monitor, without having to sit in a forced position to prevent glare.

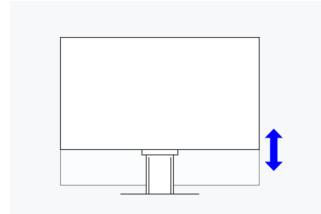


## Ergonomic stand

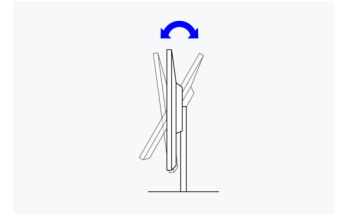
Our screens offer continuous height adjustment. Depending on the model, they can even be lowered to the base plate of the stand. This guarantees the best possible ergonomics, regardless of whether the user is sitting or standing in front of the screen. You can also swivel, ro-

tate and tilt the monitor base to the position that is most comfortable for your posture.

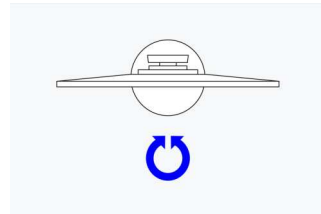
The CS2740 can also be rotated into the portrait format, which is a great advantage for tethered shoots of people in the portrait mode, for example.



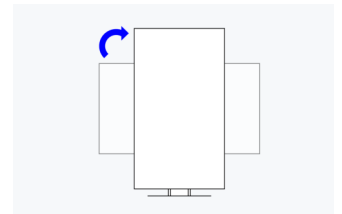
**Height**  
155 mm



**Tilt**  
Between 5° forwards and 35° backwards



**Swivel**  
344°



**Rotation**  
clockwise

## Customised key assignment

Depending on the model, up to two sensor buttons on the front can be assigned functions from the on-screen menu. The advantage: you have direct access to frequently used features.

## **Sustainability**

### **Environmentally and socially conscious production**

#### **Socially responsible production**

The CS2740 is produced in a socially responsible way. It is free of child labour and forced labour. Suppliers along the supply chain have been carefully selected and they have also committed themselves to produce in a socially responsible way. This applies in particular to conflict minerals. We present a detailed report about our social responsibility annually and voluntarily.



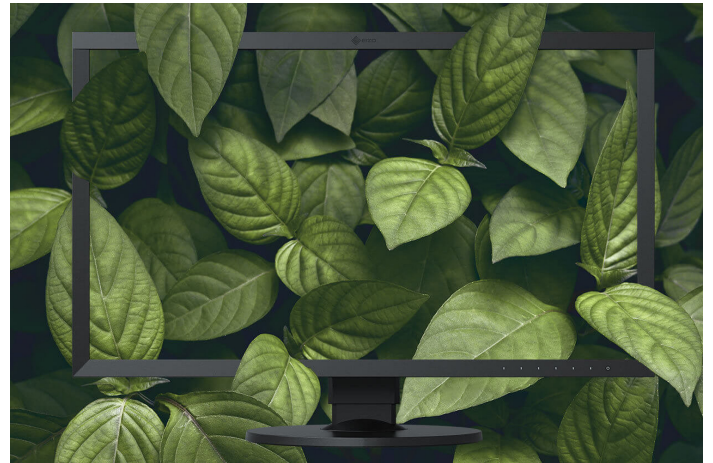
#### **Environmentally and climate friendly**

Each CS2740 is manufactured in our own factory, which implements an environmental and energy management system in accordance with ISO 14001 und ISO 50001. This includes measures to reduce waste, wastewater and emissions, resource and energy consumption, as well as to encourage environmentally conscious behavior among employees. We publicly report on these measures on an annual basis.



#### **Sustainable and durable**

The CS2740 is designed for a long service life that takes into account the entire lifecycle and impact on the environment. It is generally well above the five-year guarantee. Spare parts are available up to five years after the end of production. The monitor's long service life and the ability to repair it save resources and the climate. When designing the CS2740 we paid attention to reducing resource consumption by using high-quality components and materials and being meticulous in production.



## Warranty

### Highest investment security

#### Five-year warranty

EIZO grants a five-year warranty. This is possible thanks to the highly developed production process based on a simple principle of success: sophisticated and innovative technology, made from high-end materials.





## Technical Data

### GENERAL

Item no.	CS2740
Case color	Black
Areas of application	Photography, Video & Graphics
Product line	ColorEdge
Areas of application	Photography, image editing and retouching, Video Editing, Post Production and Colour Grading, Design, creation and illustration, Textile and fashion industry
Specific system requirements	None, compatible with most computers and operating systems including macOS and Windows
EAN	4995047055624

### SCREEN

Screen size [in inches]	26,9
Screen size [in cm]	68,4
Format	16:9
Viewable image size (width x height) [in mm]	596,2 x 335,4
Ideal and recommended resolution	3840 x 2160 (4K UHD)
Pixel pitch [in mm]	0,155 x 0,155
Pixel density [in ppi]	164
Supported resolutions	3840 x 2160 (4K UHD), 2560 x 1600, 2560 x 1440, 2560 x 1440 (@ 30 Hz), 1920 x 1200, 1680 x 1050, 1600 x 1200, 1280 x 1024, 1024 x 768, 800 x 600, 720 x 400, 640 x 480, 1080p (@ 60 Hz), 1080i (@ 60 Hz), 1080p (@ 50 Hz), 1080i (@ 50 Hz), 1080p (@ 30/25/24 Hz), 720p (@ 60 Hz), 720p (@ 50 Hz), 576p (@ 60 Hz), 576p (@ 50 Hz), 480i (@ 60 Hz)
Panel technology	IPS (Wide Gamut)
Max. viewing angle horizontal	178
Max. viewing angle vertical	178
Number of colors or greyscale	1.07 billion colors (USB-C, 10-bit), 1.07 billion colors (HDMI, 10 Bit), 1.07 billion colors (DisplayPort, 10 Bit)
Color palette/look-up table	278 trillion color tones / 16 Bit
Max. color space (typical)	DCI P3 (>90%), AdobeRGB (>99%), ISO Coated V2 (>99%), Rec709 (100%), EBU (100%), SMPTE-C (100%), sRGB (100%)
Max. brightness (typical) [in cd/m <sup>2</sup> ]	350
Max. dark room contrast (typical)	1000:1
Response time grey-grey alternation (typical) [in ms]	10
Max. refresh rate [in Hz]	60
Backlight	LED

### CONNECTIONS

Signal inputs	HDMI (Deep Color, HDCP 1.4/2.2), USB-C (DisplayPort Alt Mode, HDCP 1.3), DisplayPort (HDCP 1.3)
USB specification	USB 5Gbps (USB 3)
USB upstream ports	1 x type C (DisplayPort Alt Mode, 60 W max.), 1 x type B
USB downstream ports	4 x Typ A ( 2 x 5Gbps (USB 3), 2 x USB 2)
Graphic signal	USB-C, DisplayPort, HDMI (RGB, YUV)

### FEATURES & OPERATION

USB-C docking	✓
KVM switch	✓
Hardware calibration of brightness and luminance characteristics	✓
Preset color/greyscale modes	AdobeRGB, sRGB, additional memory spaces through calibration
Digital Uniformity Equalizer (homogeneity correction)	✓
No flickering	✓
I/P conversion	✓
Noise suppression (HDMI)	✓
HDCP Decoder	✓
Automatic signal input recognition	✓
On-screen menu languages	de, en, fr, es, it, se
Adjustment options	Brightness, Contrast, Color temperature/White point, Gamma, Colour tone, Color saturation, Resolution, Scaling, Color matrix YUV/ RGB, OSD language, Signal input, DUE priority
Button Guide	✓
Integrated power unit	✓

### ELECTRICAL DATA

Frequency	USB-C/DisplayPort: 25.0 - 137 kHz, 23 - 61 Hz; HDMI: 15 - 135 kHz, 23 - 61 Hz
Power consumption (typical) [in watts]	36
Maximum Power Consumption [in watts]	168 (at maximum brightness with all signal inputs and USB ports in use)
Max. Power consumption in stand-by mode [in watts]	1
Power consumption with power switch off [in watts]	0
Energy efficiency class	G
Energy consumption/1000h [in kWh]	38
Power supply	AC 100-240V, 50/60Hz
Max. USB-C Power Delivery [in Watt]	60

### DIMENSIONS & WEIGHT

Dimensions (incl. stand) (width x height x depth) [in mm]	638 x 404-559 x 265
Weight (incl. stand) [in kg]	10.3
Rotatability of the stand [in °]	344
Tiltability forwards/backwards [in °]	5 / 35
Pivot between portrait / landscape	clockwise
Height adjustment range [in mm]	155
Hole spacing	100 x 100

## CERTIFICATION & STANDARDS

Certification	CE, CB, TÜV/GS, TÜV/Ergonomics (including ISO 9241-307), RCM, cTÜVus, FCC-B, CAN ICES-3 (B), TÜV/S, PSE, VCCI-B, RoHS, WEEE, China RoHS, CCC, EAC
---------------	---

## SOFTWARE & ACCESSORIES

Accompanying software and other accessories are available for download	ColorNavigator Network, ColorNavigator
Other box contents	USB/signal cable (USB-C - USB-C), USB cable (Type A - Type B), Signal cable DisplayPort - DisplayPort, Manual via download, Power cord, Quick guide
Accessories	PM200-K, HH200PR-K, EX4, CH2700

## WARRANTY

Warranty periode	5 years for unit and LCD module up to 30,000 operating hours, whichever comes first.
Warranty type	Swiss Edition Warranty
Included warranty	Zero pixel defects guarantee; no fully illuminated sub-pixels (sub-pixels ISO 9241-307) for six months from date of purchase.



**Experience the  
CS2740 in AR now!**

Find your EIZO contact:  
EIZO AG - Switzerland  
Moosacherstrasse 6, Au  
8820 Wädenswil ZH  
Phone +41 44 782 24 40  
[www.eizo.ch](http://www.eizo.ch)